



**ELI CARNAHAN
DESIGN**

Plate 1 of 2:
Grid

Director: Amy
Dunlap

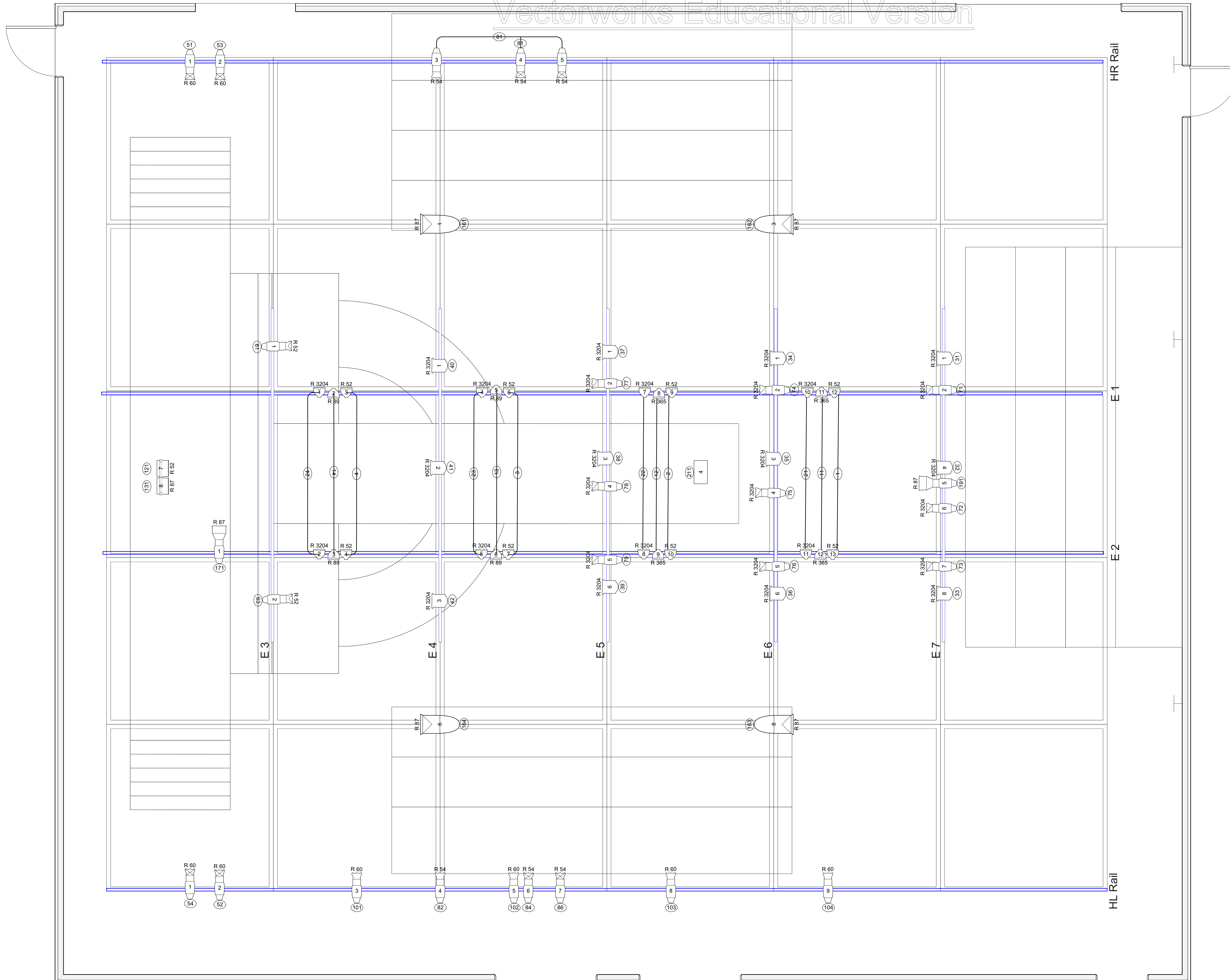
LD: Eli
Carnahan

TD: Josh Davis

3/8"=1'



MACBETH



Symbol Key

Light		
	Altman 8" Fresnel	12
	NSI Colortran 5/50 40°	4
	ETC CESource-4 10°	2
	ETC CE Source-4 19°	8
	ETC CE Source 4 26°	13
	ETC CE Source-4 36°	10
	ETC CE Source-4 50°	2
	ETC Source 4 PAR MCM (WFL)	26
	Atomic 3000 DMX	1
	EC-L	4
	EC-R	4

Moving Light		
	Platinum Spot 35 Pro	3

Color Summary

Color	Size	Count
●	R 3204 7.5"	8
●	R 3204 EC-L	3
●	R 3204 10"	12
●	R 3204 6.25"	9
●	R 34 EC-R	3
●	R 365 7.5"	4
●	R 47 6.25"	4
●	R 52 7.5"	10
●	R 52 6.25"	2
●	R 52 EC-L	1
●	R 54 6.25"	6
●	R 60 6.25"	8
●	R 87 7.5"	4
●	R 87 10"	2
●	R 87 6.25"	4
●	R 87 PAR 64	4
●	R 87 EC-R	1
●	R 89 7.5"	4

